

Raised garden bed: installation and care

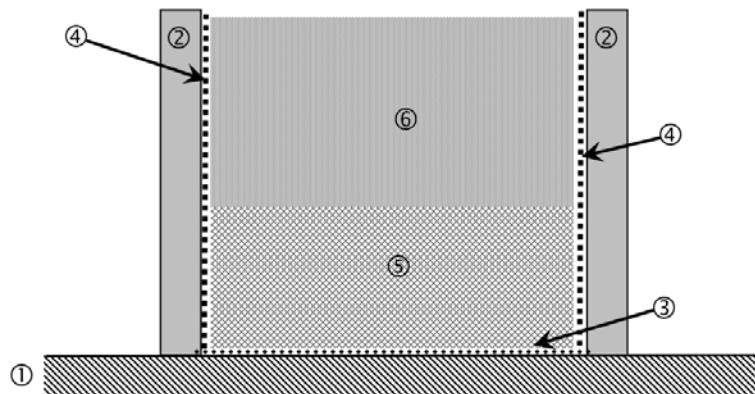


A raised bed is both a decorative and useful element that allows the production of vegetables or growing flowers in pleasant working conditions.

Where should it be installed? It can be installed both on hard ground and on naked soil.

How big should it be? It can be varied depending on the situation and the preferences of its users. In general, its height is between 50 and 80 cm and width between 80 and 130 cm.

What material to choose? It can be built up with wood (choose, for example, larch, which does not rot quickly), cement, stones, pallets,



Scheme of a raised garden bed

- ① Ground
- ② Walls of the raised bed
- ③ Fine mesh screen against mice
- ④ Bubble wrap
- ⑤ Drainage material (sieve oversize)
- ⑥ Growing medium

Independently of the size and material, some **basic rules** must be followed to ensure that the **raised garden bed** will give the expected pleasure and lead to success.

1. Especially if the raised bed is placed on bare soil, a **fine mesh screen** should be placed at the bottom of the raised bed to protect the contents from mice.



2. Cover the inner walls of the raised bed with a **bubble wrap**. If the raised bed is made of wood, it will be protected from rotting too quickly. In the raised bed, the walls of which are filled with stones, the film protects against drying of the growing medium by the wind.



© biophyt ltd., Jacques G. Fuchs. December 2020

biophyt ltd.: quality guaranties your future !

biophyt ltd., Dr. J. Fuchs, Nackthof 41, CH-5465 Mellikon,
☎ 079/216'11'35, Email: jacques.fuchs@biophyt.ch, homepage: www.biophyt.ch



3. In order to allow good drainage and avoid asphyxiation of the growing medium as a result of a rainy period, a layer of at least 15 cm of **sieve oversize of a compost** should be placed on the bottom of the raised bed. In the case of a raised bed with a height of more than 60 cm, the sieve cover can be filled up to about 40 cm from the top edge of the raised bed.



4. Fill raised bed with **growing medium**. The following mixture can be recommended::

- 50% **high quality mature green compost**, sieved to 20 mm
- 40% **field soil**, sieved to 20 mm
- 10% **coconut fibers** (or wood fibers).

Mineral structural materials such as pozzolan, silica sand, brick dust or perlite can also be added.



5. An **irrigation system** attached to the perimeter of the raised bed is advisable. This will not interfere with the plant cultivation work.



6. For **fertilizing** the raised bed, it is usually advisable to apply only about 250 g of horn shavings per m² per year in spring to provide the necessary available nitrogen for the plants. The other fertilizing elements are contained in sufficient quantity in the compost.



7. At the initial stage, the compost sieve oversize and the growing medium will settle. After one year, in a raised bed of 80 cm in height, it is quite possible to observe a decrease in volume of the material by 20 to 25 cm. For this reason, **additional growing medium should be added in the spring during the first few years**.

8. For the winter months, a **cold frame** can be installed on the raised bed and thus also used as a forcing bed.



We wish you much success with your raised bed.
Please do not hesitate to contact us if you have any questions.

biophyt ltd.: quality guaranties your future !

biophyt ltd., Dr. J. Fuchs, Nackthof 41, CH-5465 Mellikon,
☎ 079/216'11'35, Email: jacques.fuchs@biophyt.ch, homepage: www.biophyt.ch