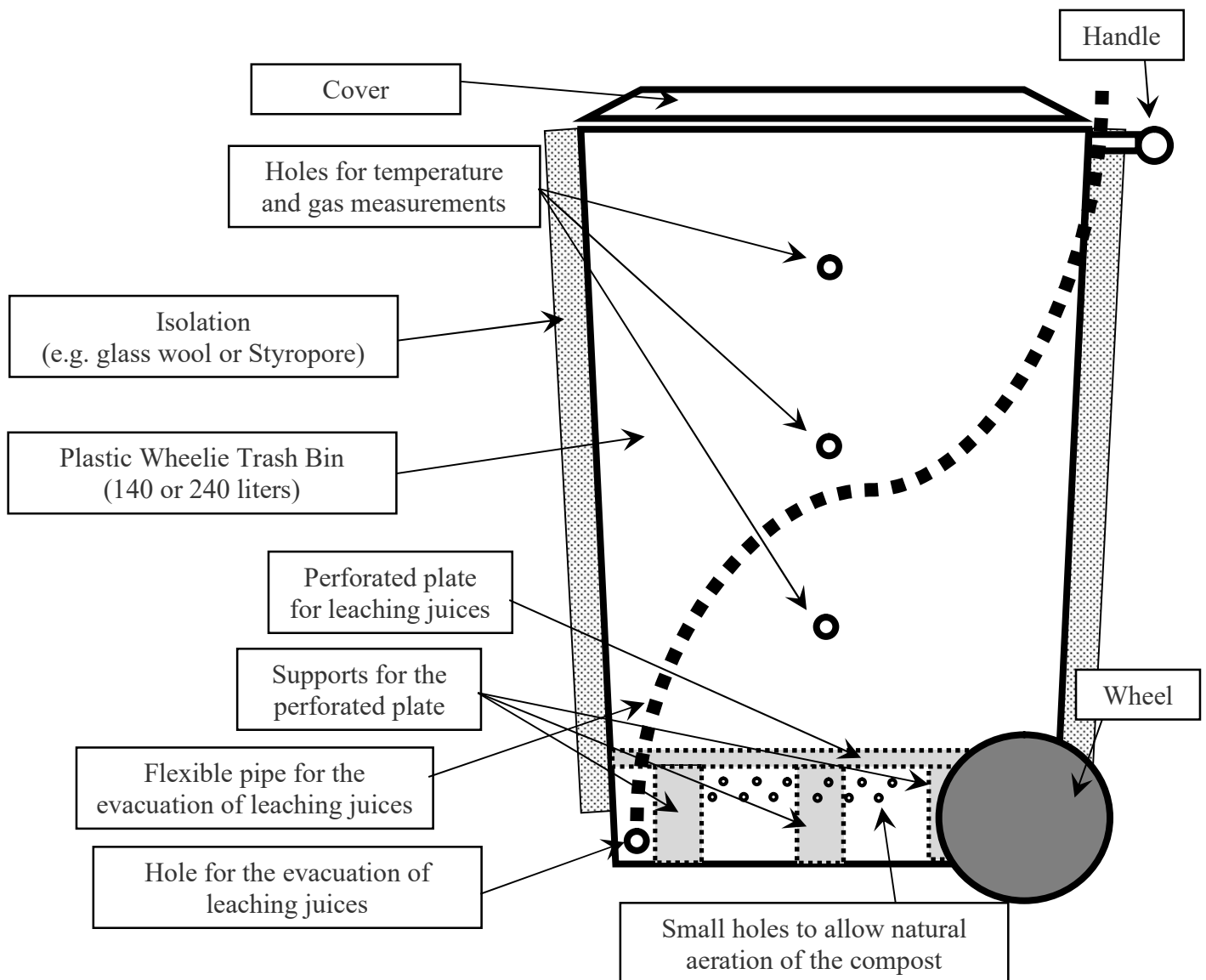




Test composter

Developed by Jacques G. Fuchs, 2010

Schematic of the system



biophyt ltd, quality garanties your future!

biophyt ltd, Dr. J. G. Fuchs, Nackthof 41, CH-5465 Mellikon,

☎ : +41 56 250 50 42, handy: +41 79 216 11 35, e-mail: jacques.fuchs@biophyt.ch, Homepage: www.biophyt.ch



Photos of the test composter (part 1)



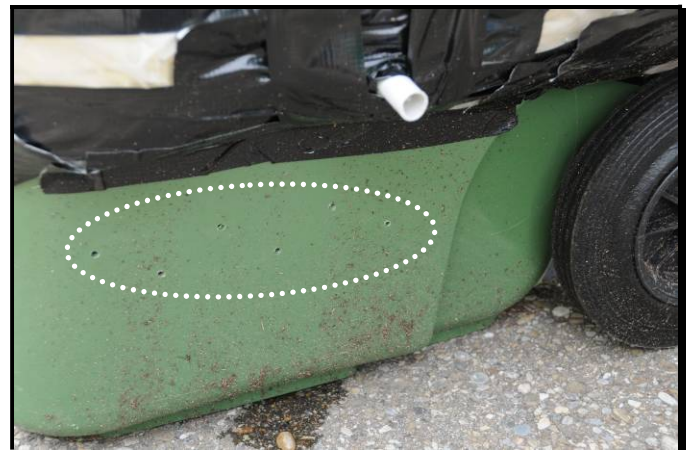
Test composter 240 liter



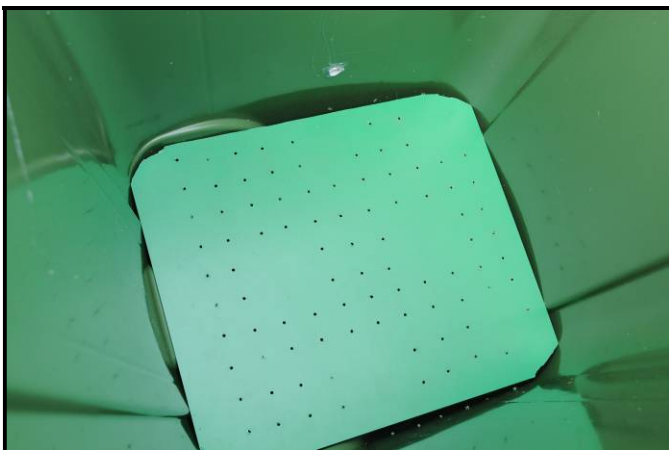
Test composters 140 liter



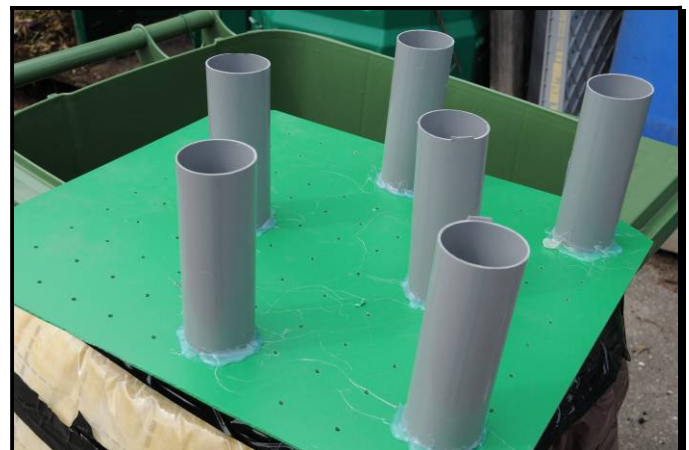
Test composter: view of holes for temperature and gas measurements



Test composter: view of small holes to allow natural aeration of the compost



Test composter. view of perforated plate for leaching juices



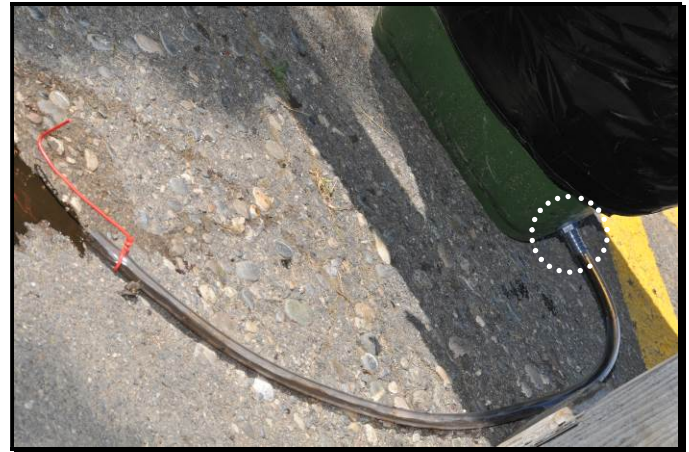
Test composter: view of supports for the perforated plate



Photos of the test composter (part 2)



Test composter: view of the flexible pipe for the evacuation of leaching juices 240 liter



Test composters: view of the hole for the evacuation of leaching juices

Working with the test composter (part 1)



Preparation of mixture to test: woody material after shredder.



Preparation of mixture to test: woody material after shredder



Preparation of mixture to test: add other material (e.g. chicken manure)



Preparation of mixture to test: mix the materials



Working with the test composter (part 2)



*Preparation of mixture to test:
add water to mixture until optimal moisture*



*Preparation of mixture to test:
add water to mixture until optimal moisture*



*Preparation of mixture to test:
Example of optimal start mixture*



Filling the composter



Filled composter



*Measurement of temperature (at the different
heights of the composter)*

Working with the test composter (part 3)



Measurement of temperature (at the different heights of the composter)



Measurement of temperature (at the different heights of the composter)



Measurement of gas composition (at the different heights of the composter)



Measurement of gas composition (at the different heights of the composter)



Turning the compost: first empty the leaching juices



Turning the compost: lay down the composter

Working with the test composter (part 4)



Turning the compost: turn the composter over



Turning the compost: empty the composter



Turning the compost: if necessary, take a representative compost sample



Turning the compost: control the moisture of the compost, if needed add water



Turning the compost: mix the compost



Turning the compost: fill the composter again

We wish you a lot of success with the test composter.